

F.P.JOURNE

Invenit et Fecit

User manual / Centigraphe - Ref. CT2

A unique design based on an exclusive mechanism

**When buying this watch,
you are contributing to the support of the ICM**



Because disorders of the brain and spinal cord now affect more than one person out of eight, they constitute a genuine public health issue which concerns each and everyone of us.

Disorders of the brain and spinal cord_

The brain and its extension, the spinal cord, make up the nervous system. If its natural functioning is disturbed or interrupted as a result of a disease or an accident, there may be direct consequences causing motor, intellectual and psychological handicaps. Due to the impact on the personal, family and professional lives of the victims, these conditions call for universal involvement.

Number of persons affected worldwide by the five largest pathologies_

Alzheimer / 24 millions

Nervous Breakdown / 12 millions

Epilepsy / 50 millions

Parkinson / 6.5 millions

Multiple Sclerosis / 2.5 millions

Venez soutenir
l'Institut du Cerveau
et de la Moelle épinière
www.icm-institute.com

ALZHEIMER
TRAUMATISME
FRAI
SCLÉROSE
E

LA MOELLE ÉPINIÈRE

AMYOTROPHIQUE

TRAUMATISME
ÉPINIÈRE

icm
Institut du Cerveau
et de la Moelle épinière





François-Paul Journe, Jean Todt, Gérard Saillant

Since its creation, the ICM has benefited from the support of personalities from the world of sport, culture, business... As founder members of ICM, they have all opted to invest in this project to ensure its success.

The Centigraphe supports the ICM Institute in Paris for the research against brain and spinal cord diseases_

You too, like the many notable personalities who have committed themselves to this project, can assist the ICM in advancing the research in the fight against brain and spinal cord disorders.

ICM, founder members_

Jean Todt Chairman of the FIA (Fédération Internationale de l'Automobile) / **Gérard Saillant** Professor of orthopaedic and trauma surgery, the ICM Foundation Chairman / **Michael Schumacher** Formula 1 Champion / **Yves Agid** Professor of neurology and neuroscience / **Luc Besson** Film director / **Louis Camilleri** Chairman of Altria / **Jean Glavany** Former Minister, The ICM Foundation Executive Manager / **Maurice Lévy** Chairman of the Publicis Group Board / **Olivier Lyon-Caen** Professor of neurology / **Jean-Pierre Martel** Lawyer / **Max Mosley** Former Chairman of the FIA / **Lindsay Owen Jones** President of l'Oréal / **Serge Weinberg** Chairman of the Accor Board, the ICM Foundation Treasurer / **Michelle Yeoh** Actress, God Mother of ICM / **Jean Reno** Actor, God Father of ICM.

You can show your support by sending your donations by post to ICM or online to www.icm-institute.org



J.P. Parente-ICM

Laying of the first stone for the new ICM building in Paris, in presence of François-Paul Journe and the ICM founding members. **June 18, 2008**



ICM building in the heart of the Pitié-Salpêtrière's hospital
in the 13th district of Paris.

In becoming owner of this watch,
you are contributing to support the ICM_

The ICM institute is the world largest research laboratory that gathers in the heart of the Hospital Pitié-Salpêtrière in Paris, over 700 researchers, doctors and patients, playing an essential role in the process of discovery and treatment for nervous system disorders.

Godfather of the Centigraphe Souverain, Jean Todt remains the initiator of F.P.Journe's engagement towards the ICM, Institute of Brain and Spinal Cord in Paris.

Since 2004, F.P.Journe has committed to donating 30% of the profits from the sale of each Centigraphe to the ICM, with no time limit. In purchasing the Centigraphe Sport, or the Centigraphe Souverain, you are supporting the medical research carried out by the ICM to help fight diseases such as Alzheimer's, Parkinson's, and Multiple Sclerosis....

You can support the ICM close to its founding members, Professors Gérard Saillant and Yves Agid, Luc Besson, Michel Schumacher, Michelle Yeoh, Jean Réno and Jean Todt, by making a donation to: **www.icm-institute.org**

The Centigraphe

Patented ergonomic chronograph_

The chronograph is started, stopped and zeroed by a rocker at 2 o'clock in the case band, instead of the usual buttons on either side of the crown. This ergonomic design, perfectly fitted to the wristwatch, is patented.

A second patent was granted for the mechanism's ingenious configuration, which effectively isolates the chronograph from the timekeeping function. This means the balance amplitude is unaffected when the chronograph is running.

The hands of the 100th of a second counter, the 20 seconds, and the 10 minutes hand are driven by 2 different wheel trains, themselves driven by the centre of the mainspring (system patented for the Sonnerie Souveraine). Another separate train of wheels, also driven by the barrel arbor, drives the 10-minutes hand.

The 20-seconds and the 10-minutes hands arbors are zeroed by hammer levers acting on snail cams. The 100th of a second hand is stopped at zero by a beak protruding from its pinion, which presses on a lever and thus blocks the chronograph train.

One ingenious feature of the 100th of a second is that it may be stopped anywhere along its one-second journey around its dial, even between two 100th-second divisions, enabling a fractional reading.

The 100th of a second's hand, released by the watch's escapement, makes one revolution of the dial per second. A wheel mounted on the escape wheel (4th wheel of the going train) releases the arbor to which the hand is fitted. The seconds are driven by the going train from the barrel, and by the energy of the chronograph train, as transmitted by the barrel arbor. This is achieved by vertically disengaging the pinion of the 100th of a second hand from that of the escapement, which presses on the pivot shank and acts as a brake.

The barrel features a maintaining power system in order to ensure that the driving force does not decrease during winding. The mainspring supplies at least 100 hours of power reserve without the chronograph, and 24 hours with the chronograph running.

The crown_

Winding:

Pull the crown out to position **1** and turn forwards it until it stops.
The spring for the time of day and the chronograph will be fully wound.

Setting the time:

Pull the crown out to position **2** and turn it back to bring the hands to the right time.

Please note!

Push the crown back to position **0** for the watch to work.

Rocker arm_

3 / Stopping and starting the chronograph :

Press once to start the three chronograph hands.

Press once more to stop the chronograph.

It is unnecessary to restart the chronograph because there are no split hands.

4 / Return to zero :

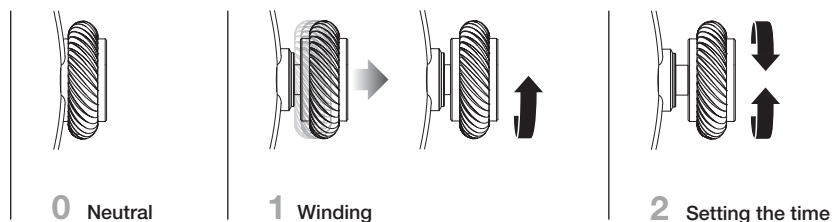
When the chronograph has stopped, press once to return the three chronograph hands to zero.

The chronograph will not return to zero while it is running.

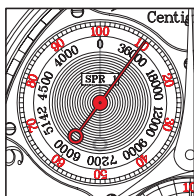
Important!

The Centigraphe measures events for a length of 10 minutes maximum.

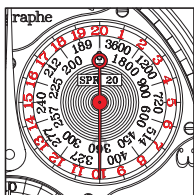
We wouldn't guarantee the precision for an event exceeding this length of time.



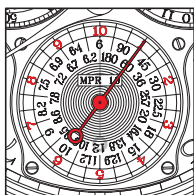
IN RED
TIME SCALE



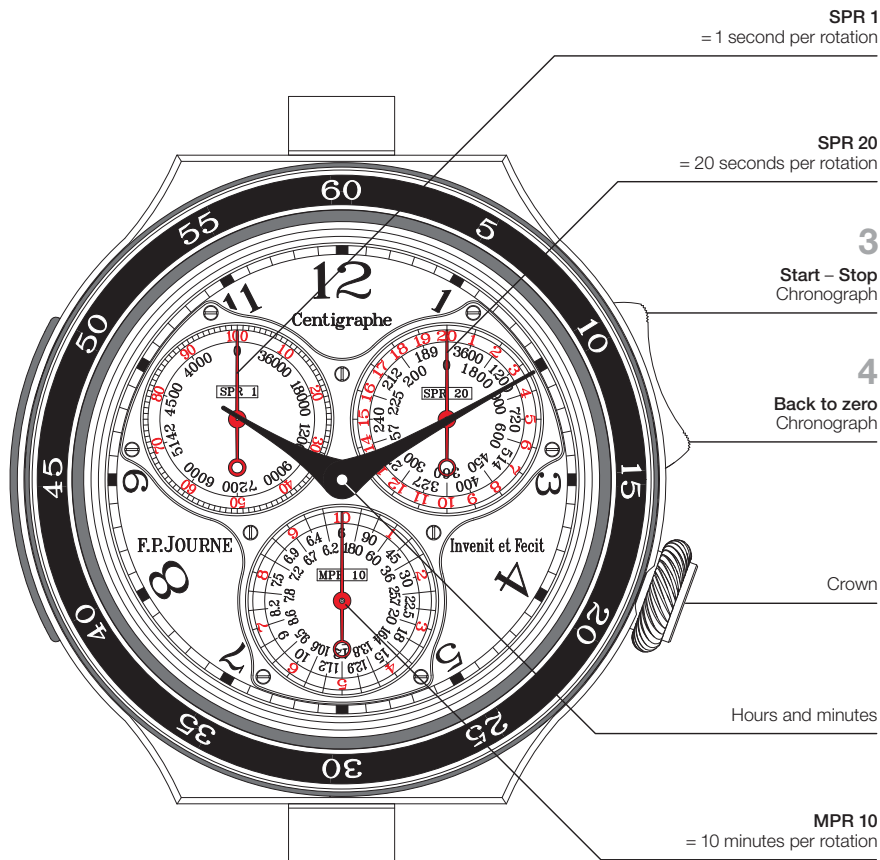
1km in 1/10th of a second
= 36'000 km/h



1km in 10 seconds
= 360 km/h



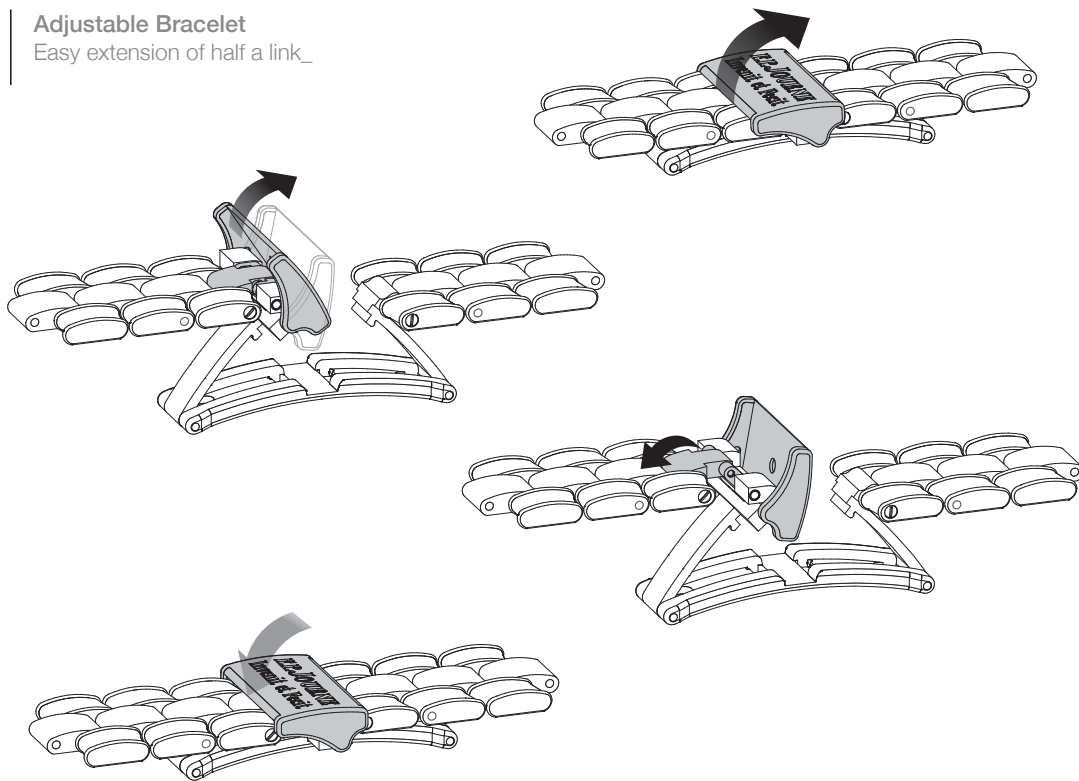
1km in 1 minute
= 60 km/h



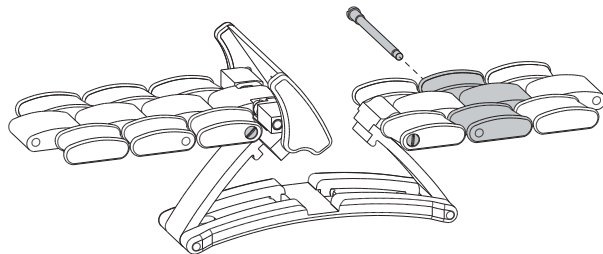
The counter sub-dials are fixed by a circle screwed* on the dial. *Registered system.

Adjustable Bracelet

Easy extension of half a link_



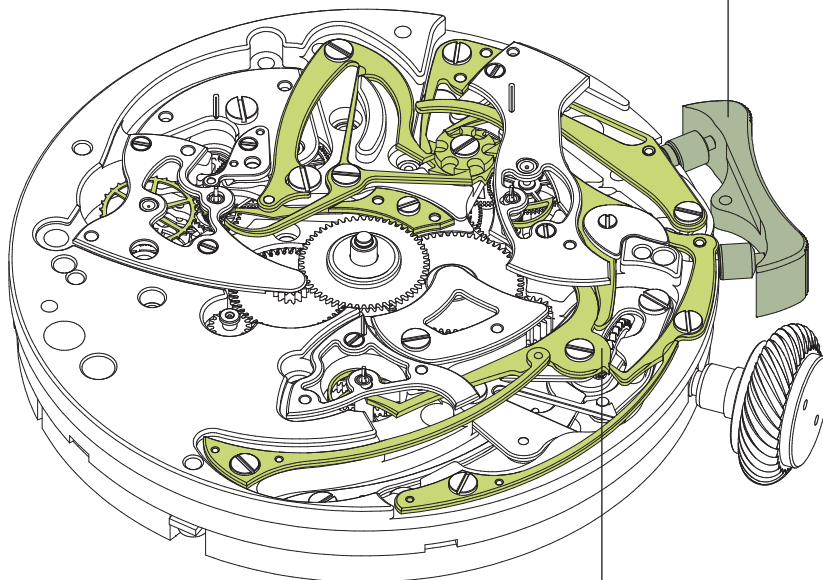
Shortening the bracelet
of 1 or 2 links_



Mechanism of Centigraphe

Patented system EP

Patent - Switch
EP 1818734 A1



Patent - Chronograph
EP 07405107

Specifications

Movement_	Calibre 1506 Manual winding / 18 stem turns Movement in 18K rose Gold
Dimensions of the movement_	Overall diameter: 34.40 mm Casing-up diameter: 34.00 mm Overall height: 5.60 mm Height of winding stem: 2.69 mm Diameter of stem thread: S1.20 mm
Balance_	Free-sprung balance Four adjustable inertia weights Anachron balance spring Mobile stud holders Pinned GE stud Laser soldered balance spring Frequency: 21,600 v/h, (3Hz) Inertia: 10.10 mg*cm ² Angle of lift: 52° Amplitude: 12h dial up: > 300° 12h vertical: > 260°
Escapement_	In-line lever escapement 15-tooth escape wheel
Indications_	Central hours and minutes 1-second chronograph hand at 10 o'clock. 20-seconds chronograph hand at 2 o'clock. 10-minutes chronograph hand at 6 o'clock.
Power reserve_	80 hours with the chronograph stopped 24 hours with the chronograph running

Chronograph_	Separate chronograph train driven directly from the mainspring. 1/100th second readout	
Finish_	Circular stripes on bridges Circular graining on baseplate Polished screw heads with chamfered slots Pegs with polished rounded ends Steel components polished, chamfered and straight-grained	
Case_	Platinum or 18K Gold Diameter : Total height :	44 mm 10.95 mm
Dial_	Blue-Mauve Silver guilloché or ruthenium Silver guilloché Steel hands rhodium-plated or 5N Golden and red lacquered Titanium Gold appliqué numerals	
Number of parts_	Movement without dial : Jewels	284 50

Maintenance_

Your wristwatch should be serviced once **every four years** to maintain its precision.

Important_

Keep the original warranty card supplied with your wristwatch carefully. Your authorized **F.P. JOURNE** retailer will need this identity card for any after sales servicing. For all maintenance or repair, your wristwatch must be entrusted only to an appointed **F.P. JOURNE** agent.

Warranty_

Your **F.P.Journe - Invenit et Fecit** watch is covered by a warranty against any manufacturing flaws for a period of **2 years** as of the date of purchase appearing on the back of the warranty card or certificate. The warranty is valid only on presentation of the original card or certificate, duly filled out by the authorised retailer (serial number, date of purchase, retailer's stamp). The warranty does not cover normal wear or damage resulting from abnormal use of the watch, accidents or alterations.

Warranty extension_

If your **F.P.Journe - Invenit et Fecit** watch was purchased at an **F.P.Journe Boutique**, your watch is automatically covered for a period of **3 years** as of the date of purchase appearing on the back of the warranty card or certificate. If your watch was purchased at an **authorized retailer**, we kindly invite you to register on <https://customerservice.fpjourne.com/en/guarantee> during the 30 days following the initial date of purchase to benefit from **an additional year of warranty**.